



Assembly and Parts Manual

3D Welding Table



Baileigh Industrial
P.O. Box 531
Manitowoc, WI 54221-0531
Phone: 920.684.4990
Fax: 920.684.3944
Baileigh-Sales@jpwindustries.com

REPRODUCTION OF THIS MANUAL IN ANY FORM WITHOUT WRITTEN APPROVAL OF BAILEIGH INDUSTRIAL IS PROHIBITED. Baileigh Industrial does not assume and hereby disclaims any liability for any damage or loss caused by an omission or error in this Operator's Manual, resulting from accident, negligence, or other occurrence.

TABLE OF CONTENTS

| | |
|---|---|
| Thank You & Warranty | 2 |
| 1.0 General Notes | 4 |
| 2.0 Safety Information | 5 |
| 3.0 Technical Support..... | 5 |
| 4.0 Unpacking..... | 5 |
| 5.0 Assembly | 5 |
| 6.0 Replacement Parts & Accessories | 9 |

THANK YOU & WARRANTY

Thank you for your purchase from Baileigh Industrial. We hope you find it productive and useful for a long time to come.

Inspection & Acceptance. Buyer shall inspect all Goods within ten (10) days after receipt thereof. Buyer's payment shall constitute final acceptance of the Goods and shall act as a waiver of the Buyer's rights to inspect or reject the goods unless otherwise agreed. If Buyer rejects any merchandise, Buyer must first obtain a Returned Goods Authorization ("RGA") number before returning any goods to Seller. Goods returned without an RGA will be refused. Seller will not be responsible for any freight costs, damages to goods, or any other costs or liabilities pertaining to goods returned without an RGA. Seller shall have the right to substitute a conforming tender. Buyer will be responsible for all freight costs to and from Buyer and repackaging costs, if any, if Buyer refuses to accept shipment. If Goods are returned in unsalable condition, Buyer shall be responsible for full value of the Goods. Buyer may not return any special-order Goods. Any Goods returned hereunder shall be subject to a restocking fee equal to 30% of the invoice price.

Specifications. Seller may, at its option, make changes in the designs, **specifications**, or components of the Goods to improve the safety of such Goods, or if in Seller's judgment, such changes will be beneficial to their operation or use. Buyer may not make any changes in the specifications for the Goods unless Seller approves of such changes in writing, in which event Seller may impose additional charges to implement such changes.

Limited Warranty. Seller warrants to the original end-user that the Goods manufactured or provided by Seller under this Agreement shall be free of defects in material or workmanship for a period of twelve (12) months from the date of purchase, provided that the Goods are installed, used, and maintained in accordance with any instruction manual or technical guidelines provided by the Seller or supplied with the Goods, if applicable. The original end-user must give written notice to Seller of any suspected defect in the Goods prior to the expiration of the warranty period. The original end-user must also obtain an RGA from Seller prior to returning any Goods to Seller for warranty service under this paragraph. Seller will not accept any responsibility for Goods returned without an RGA. The original end-user shall be responsible for all costs and expenses associated with returning the Goods to Seller for warranty service. In the event of a defect, Seller, at its sole option, shall repair or replace the defective Goods or refund to the original end-user the purchase price for such defective Goods. Goods are not eligible for replacement or return after a period of 10 days from date of receipt. The foregoing warranty is Seller's sole obligation, and the original end-user's exclusive remedy, with regard to any defective Goods. This limited warranty does not apply to: (a) die sets, tooling, and saw blades; (b) periodic or routine maintenance and setup, (c) repair or replacement of the Goods due to normal wear and tear, (d) defects or damage to the Goods resulting from misuse, abuse, neglect, or accidents, (f) defects or damage to the Goods resulting from improper or unauthorized alterations, modifications, or changes; and (f) any Goods that has not been installed and/or maintained in accordance with the instruction manual or technical guidelines provided by Seller.

EXCLUSION OF OTHER WARRANTIES. THE FOREGOING LIMITED WARRANTY IS IN LIEU OF ALL OTHER WARRANTIES, EXPRESS OR IMPLIED. ANY AND ALL OTHER EXPRESS, STATUTORY, OR IMPLIED WARRANTIES, INCLUDING BUT NOT LIMITED TO, ANY WARRANTY OF MERCHANTABILITY OR FITNESS FOR ANY PARTICULAR PURPOSE ARE EXPRESSLY DISCLAIMED. NO WARRANTY IS MADE WHICH EXTENDS BEYOND THAT WHICH IS EXPRESSLY CONTAINED HEREIN.

Limitation of Liability. IN NO EVENT SHALL SELLER BE LIABLE TO BUYER OR ANY OTHER PARTY FOR ANY INCIDENTAL, CONSEQUENTIAL OR SPECIAL DAMAGES (INCLUDING, WITHOUT LIMITATION, LOST PROFITS OR DOWN TIME) ARISING FROM OR IN MANNER CONNECTED WITH THE GOODS, ANY BREACH BY SELLER OR ITS AGENTS OF THIS AGREEMENT, OR ANY OTHER CAUSE WHATSOEVER, WHETHER BASED ON CONTRACT, TORT OR ANY OTHER THEORY OF LIABILITY. BUYER'S REMEDY WITH RESPECT TO ANY CLAIM ARISING UNDER THIS AGREEMENT IS STRICTLY LIMITED TO NO MORE THAN THE AMOUNT PAID BY THE BUYER FOR THE GOODS.

Force Majeure. Seller shall not be responsible for any delay in the delivery of, or failure to deliver, Goods due to causes beyond Seller's reasonable control including, without limitation, acts of God, acts of war or terrorism, enemy actions, hostilities, strikes, labor difficulties, embargoes, non-delivery or late delivery of materials, parts and equipment or transportation delays not caused by the fault of Seller, delays caused by civil authorities, governmental regulations or orders, fire, lightening, natural disasters or any other cause beyond Seller's reasonable control. In the event of any such delay, performance will be postponed by such length of time as may be reasonably necessary to compensate for the delay.

Installation. If Buyer purchases any Goods that require installation, Buyer shall, at its expense, make all arrangements and connections necessary to install and operate the Goods. Buyer shall install the Goods in accordance with any Seller instructions and shall indemnify Seller against any and all damages, demands, suits, causes of action, claims and expenses (including actual attorneys' fees and costs) arising directly or indirectly out of Buyer's failure to properly install the Goods.

Work By Others; Safety Devices. Unless agreed to in writing by Seller, Seller has no responsibility for labor or work performed by Buyer or others, of any nature, relating to design, manufacture, fabrication, use, installation, or provision of Goods. Buyer is solely responsible for furnishing and requiring its employees and customers to use all safety devices, guards and safe operating procedures required by law and/or as set forth in manuals and instruction sheets furnished by Seller. Buyer is responsible for consulting all operator manuals, ANSI or comparable safety standards, OSHA regulations and other sources of safety standards and regulations applicable to the use and operation of the Goods.

Remedies. Each of the rights and remedies of Seller under this Agreement is cumulative and in addition to any other or further remedies provided under this Agreement or at law or equity.

Attorney's Fees. In the event legal action is necessary to recover monies due from Buyer or to enforce any provision of this Agreement, Buyer shall be liable to Seller for all costs and expenses associated therewith, including Seller's actual attorney fees and costs.

Governing Law/Venue. This Agreement shall be construed and governed under the laws of the State of Wisconsin, without application of conflict of law principles. Each party agrees that all actions or proceedings arising out of or in connection with this Agreement shall be commenced, tried, and litigated only in the state courts sitting in Manitowoc County, Wisconsin or the U.S. Federal Court for the Eastern District of Wisconsin. Each party waives any right it may have to assert the doctrine of "forum non conveniens" or to object to venue to the extent that any proceeding is brought in accordance with this section. Each party consents to and waives any objection to the exercise of personal jurisdiction over it by courts described in this section. Each party waives to the fullest extent permitted by applicable law the right to a trial by jury.

Summary of Return Policy:

- 10 Day acceptance period from date of delivery. Damage claims and order discrepancies will not be accepted after this time.
- You must obtain a Baileigh Industrial issued RGA number PRIOR to returning any materials.
- Returned materials must be received at Baileigh Industrial in new condition and in original packaging.
- Altered items are not eligible for return.
- Buyer is responsible for all shipping charges.
- A 30% re-stocking fee applies to all returns.

Baileigh Industrial Holdings LLC makes every effort to ensure that our posted specifications, images, pricing, and product availability are as correct and timely as possible. We apologize for any discrepancies that may occur. Baileigh Industrial Holdings LLC reserves the right to make any and all changes deemed necessary in the course of business including but not limited to pricing, product specifications, quantities, and product availability.

For Customer Service & Technical Support:

Please contact one of our knowledgeable Sales and Service team members at: (920) 684-4990 or e-mail us at Baileigh-Service@jpwindustries.com

1.0 GENERAL NOTES

After receiving your welding table, remove the protective container. Do a complete visual inspection, and if damage is noted, **photograph it for insurance claims** and contact your carrier at once, requesting inspection. Also contact Baileigh Industrial and inform them of the unexpected occurrence. Temporarily suspend installation.

Take necessary precautions while loading / unloading or moving the machine to avoid any injuries.

Your welding table is designed and manufactured to work smoothly and efficiently. Following proper maintenance instructions will help ensure this. Try and use original spare parts, whenever possible, and most importantly; **DO NOT** overload the table or make any modifications.



2.0 SAFETY INFORMATION

WARNING – To reduce risk of injury:

1. Read and understand the entire owner's manual before attempting assembly or operation.
2. Read and understand the warnings posted on the table, in the packaging, and in this manual. Failure to comply with all warnings may cause serious injury.
3. Assembly, use, and maintenance of this product should be done by qualified personnel. A qualified person is technically competent and familiar with all safety information and established safety practices. They also should be experienced with welding and all hazards involved.
4. When assembling this product, use gloves, protective clothing, and a welding hood with proper eye protection.
5. This table is heavy. Use at least two people when moving and adjusting while assembling. After assembly, use at least two people to move the welding table to a work location.

3.0 TECHNICAL SUPPORT

Our technical support department can be reached at 920.684.4990. Tech Support handles questions on setup, schematics, warranty issues, and individual parts needs.

For specific application needs or future machine purchases contact the Sales Department at: Baileigh-Sales@jpwindustries.com
Phone: 920.684.4990, or Fax: 920.684.3944.



Note: The illustrations used in this manual are representative only and may not depict the actual labeling or accessories and may be intended to illustrate technique only.

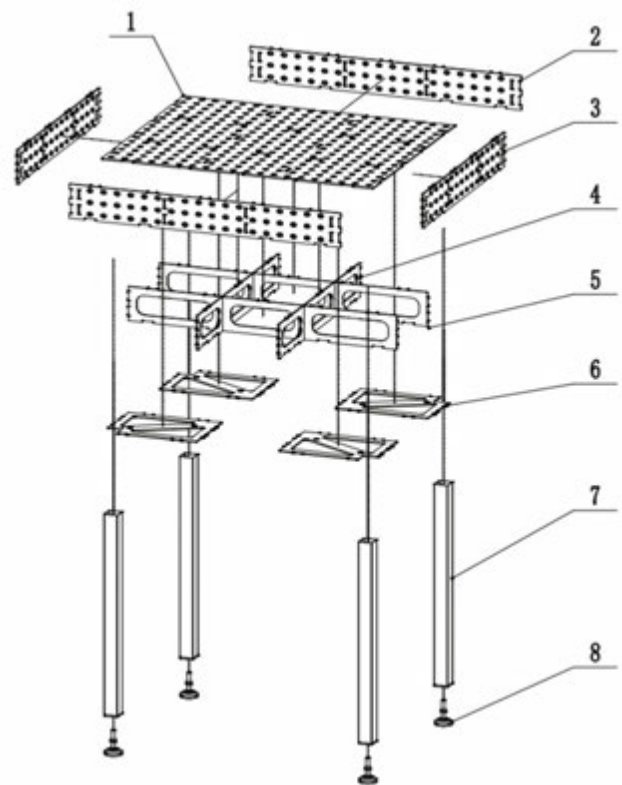
4.0 UNPACKING

Separate all parts from the packing material and check each item carefully. If any damage is found, notify your dealer immediately. Do not use if any parts are damaged. Make certain all items are accounted for before discarding any packing material.

5.0 ASSEMBLY

Inspect all parts. If any damage is found, notify your dealer immediately. Do not use if any parts are damaged.

Clean all rust-protected surfaces with a mild solvent.



Welding Table Parts Identification

1. Lay welding table top (item #1) on a flat surface. Place two support frames (item #4) onto the table top as shown in Figure 5-1. NOTE: Make sure to use the two support frames where the crossing slot openings are on the opposite side of the support frame from the welding tabs (see Figure 5-1). Insert the support frame welding tabs into the welding slots on the table top.

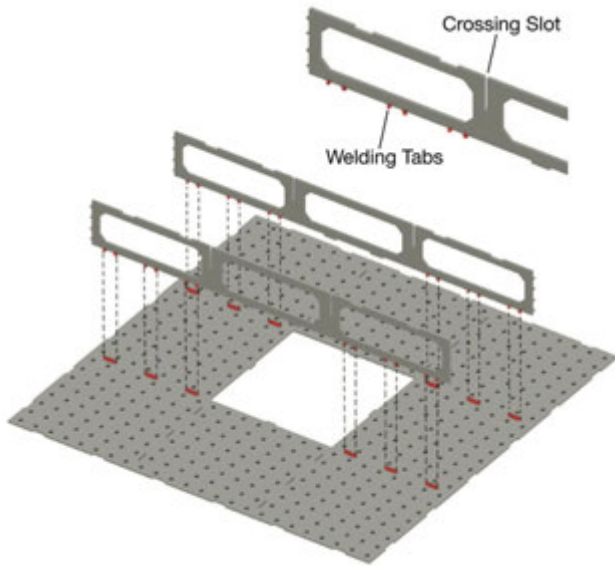


Figure 5-1

2. Install the remaining two support frames (item #5) as shown in Figure 5-2. NOTE: Make sure to use the two support frames where the crossing slot openings are on the same side of the support frame as the welding tabs (see Figure 5-2). Intersect the previous two support frames using the crossing slots. Insert the support frame welding tabs into the welding slots on the table top.

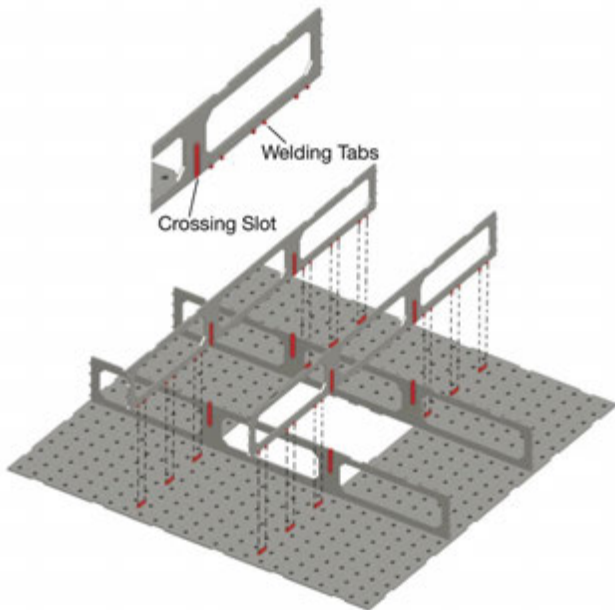


Figure 5-2

3. Put the table sides (items #2 and #3) in place as shown in Figure 5-3. Insert the welding tabs of the table sides into the welding notches of the table top edges. Also make sure the welding tabs on the ends of the support frames insert into the table side welding slots (see Figure 5-3).

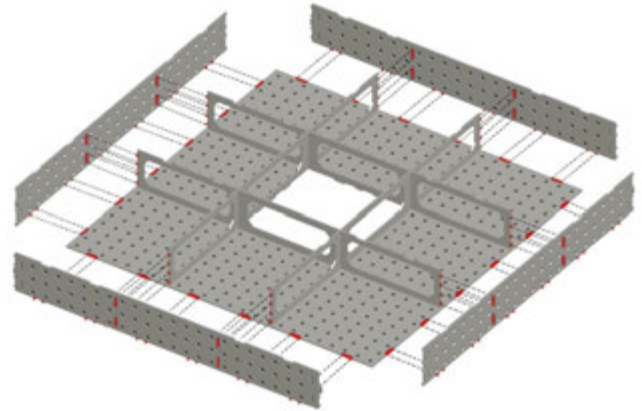


Figure 5-3

4. Insert three 1/2" threaded rods through one of the table sides and out the opposite table side. Using washers and nuts, lightly tighten each end of the threaded rods to snug the two side panels to the support frames and table top (see Figure 5-4).
5. Lay the four leg plates (item #6) in place as shown in Figure 5-4. Make sure the welding tabs of the leg plates seat into the welding notches of the support frames and side panels.

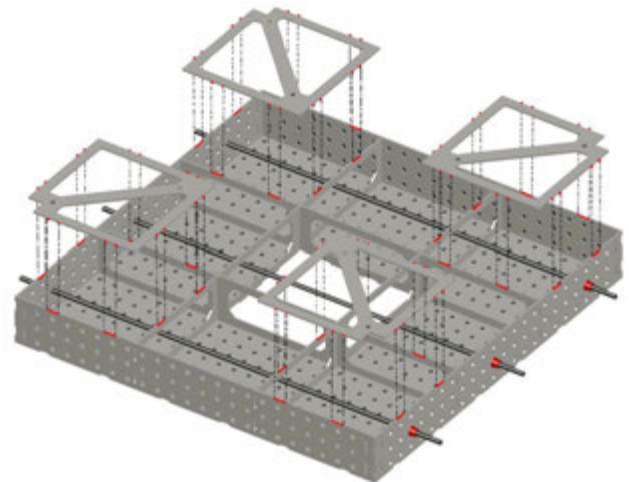


Figure 5-4

6. Insert 8 1/2" threaded rods through the holes in the leg plates and through the corresponding hole in the table top (see Figure 5-5). Using washers and nuts, lightly tighten each end of the threaded rods to snug the leg plates to the assembly.

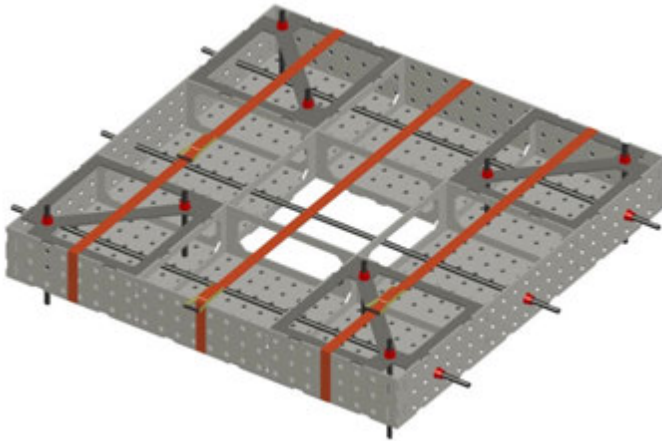


Figure 5-5

7. Wrap and tighten three ratchet straps around the assembly as shown in Figure 5-5. The entire assembly should be snug and tightened together.
8. Before welding, inspect all welding tabs and welding slots/notches connections and make sure they are all seated properly. If not, loosen straps and/or nuts to make proper adjustments and then retighten everything together.
9. Tack weld all welding tab/slot and welding tab/notch connections. Also tack weld the vertical intersections of the support frames, connecting them together.
10. Remove all ratchet straps and connecting rods used for assembly.
11. Install the adjustable feet (item #8) into the ends of the table legs (item #7).
12. Insert the table legs into the leg notches of the leg plates (item #6). Tack weld the legs to the leg plates and through the slots in the table sides. **IMPORTANT:** Make sure legs are straight and seated properly before welding into place.

6.0 REPLACEMENT PARTS & ACCESSORIES

Replacement parts are listed on the following pages. To order parts or reach our service department, call 1-800-274-6848 Monday through Friday, 8:00 a.m. to 5:00 p.m. CST. Having the Model Number and Serial Number of your machine available when you call will allow us to serve you quickly and accurately.

Non-proprietary parts, such as fasteners, can be found at local hardware stores, or may be ordered from Baileigh Industrial.

Some parts are shown for reference only and may not be available individually.

6.1 3D Welding Table – Replacement Parts

| Item No. | Part No. | Description | Qty |
|----------|-------------------|--------------------------|-----|
| 1 | BA9-1232814 | WJT-WT4848-#7 Leg | 4 |
| 2 | BA9-1232815 | WJT-WT4848-#8 Foot | 4 |

6.2 3D Welding Table – Accessories

| Item No. | Part No. | Description | Qty |
|----------|-------------------|--|-----|
| 1 | BA9-1232670 | WJT-AB1174UW-16-11.75"x7.75"x4"(A BLOCK) | 1 |
| 2 | BA9-1232671 | WJT-AB642UW-16-6"x4"x2"(A BLOCK) | 1 |
| 3 | BA9-1232672 | WJT-AB762UW-16-7.75"x6"x2"(A BLOCK) | 1 |
| 4 | BA9-1232673 | WJT-AB772UW-16-7.75"x7.75"x2"(A BLOCK) | 1 |
| 5 | BA9-1232674 | WJT-AB864UW-16-8.75"x6"x4"(A BLOCK) | 1 |
| 6 | BA9-1232675 | WJT-AS883UW-16-8"x8"x3" ADJ. SQUARE | 1 |
| 7 | BA9-1232676 | WJT-CSKUW-16-16MM STARTER CLAMP KIT..... | 1 |
| 8 | BA9-1232677 | WJT-SB1144UW-16-11.75"x4"x4"(SQ BLOCK)..... | 1 |
| 9 | BA9-1232678 | WJT-SB422UW-16-4"x2"x2" (SQ BLOCK)..... | 1 |
| 10 | BA9-1232679 | WJT-SB722UW-16-7.75"x2"x2"(SQ BLOCK)..... | 1 |
| 11 | BA9-1232680 | WJT-VM1010UW-16-10" VISE MOUNT..... | 1 |
| 12 | BA9-1232681 | WJT-WP6UW-16-6" MANUAL WELD POSITIONER | 1 |

BAILEIGH INDUSTRIAL
1625 DUFEK DRIVE MANITOWOC, WI 54220
PHONE: 920.684.4990 FAX: 920.684.3944
www.baileigh.com