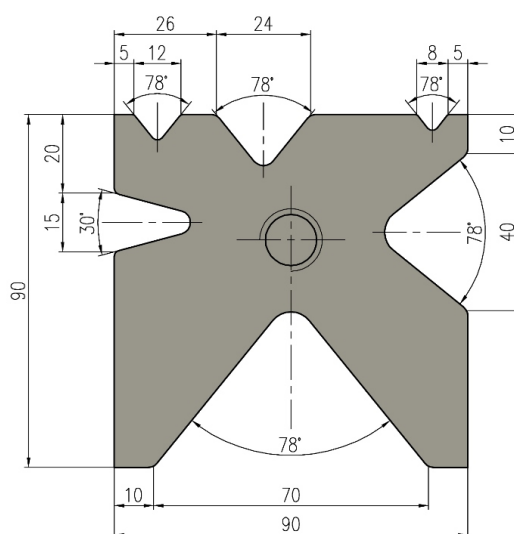


## Product Images



\*All dimensions in millimeters, unless otherwise noted.

## Short Description

## Additional Information

---

Stock Number	BA9-1000781
Approach Speed	2.0" / sec.
Back Gauge Capacity (In.)	23.62"
Bending Speed	.6" / sec.
Distance From Table To Ram	15.3"
Distance Per Stroke (In.)	4.7
Input Power	220V / 3-phase
Minimum Return Speed (In./Sec)	2.36" / sec.
Model Number	BP-11210 CNC
Prop 65	Cancer and Reproductive Harm
Shipping Dimensions (L x W x H) (In.)	168x67x96
Throat Depth (In.)	12.5"
Warranty	1 Year
Gross Weight	14550.0
Net weight	14550.0
Back Gauge Motor (hp)	1/2 hp
Distance Between Housings (In.)	102/124"

