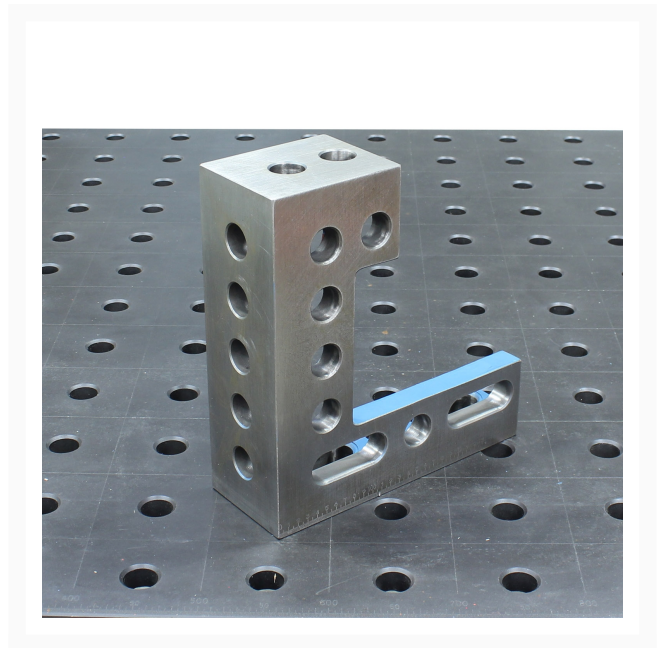
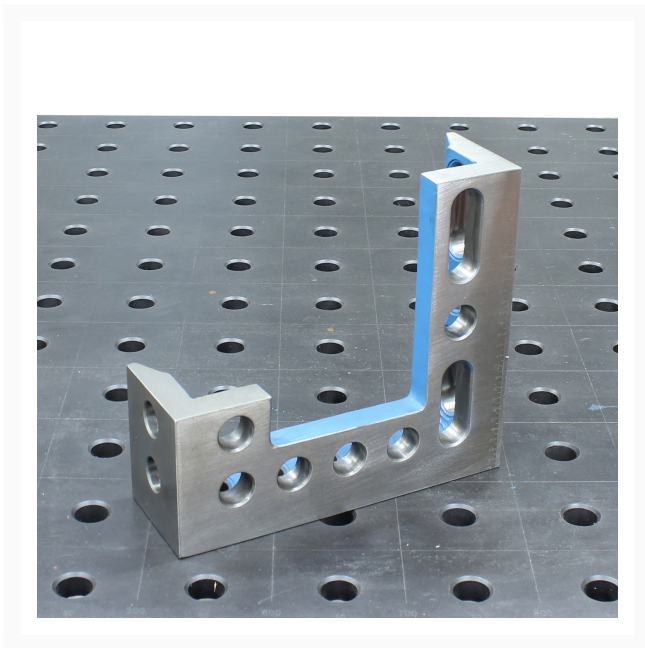




Right Clamping & Locating Angle (WJT-ST-ZC28300-R)

Product Images



Short Description

Additional Information

Stock Number	BA9-1014375
Compatibility	Any table that uses a 28mm hole on a 100mm grid
Distance Between Centers (In.)	100mm
Fixture Holes	28mm
Model Number	WJT-ST-ZC28300-R
Overall Dimensions (L x W x H) (In.)	275mm x 100mm x 300mm
Prop 65	Cancer and Reproductive Harm
Gross Weight	30.0

