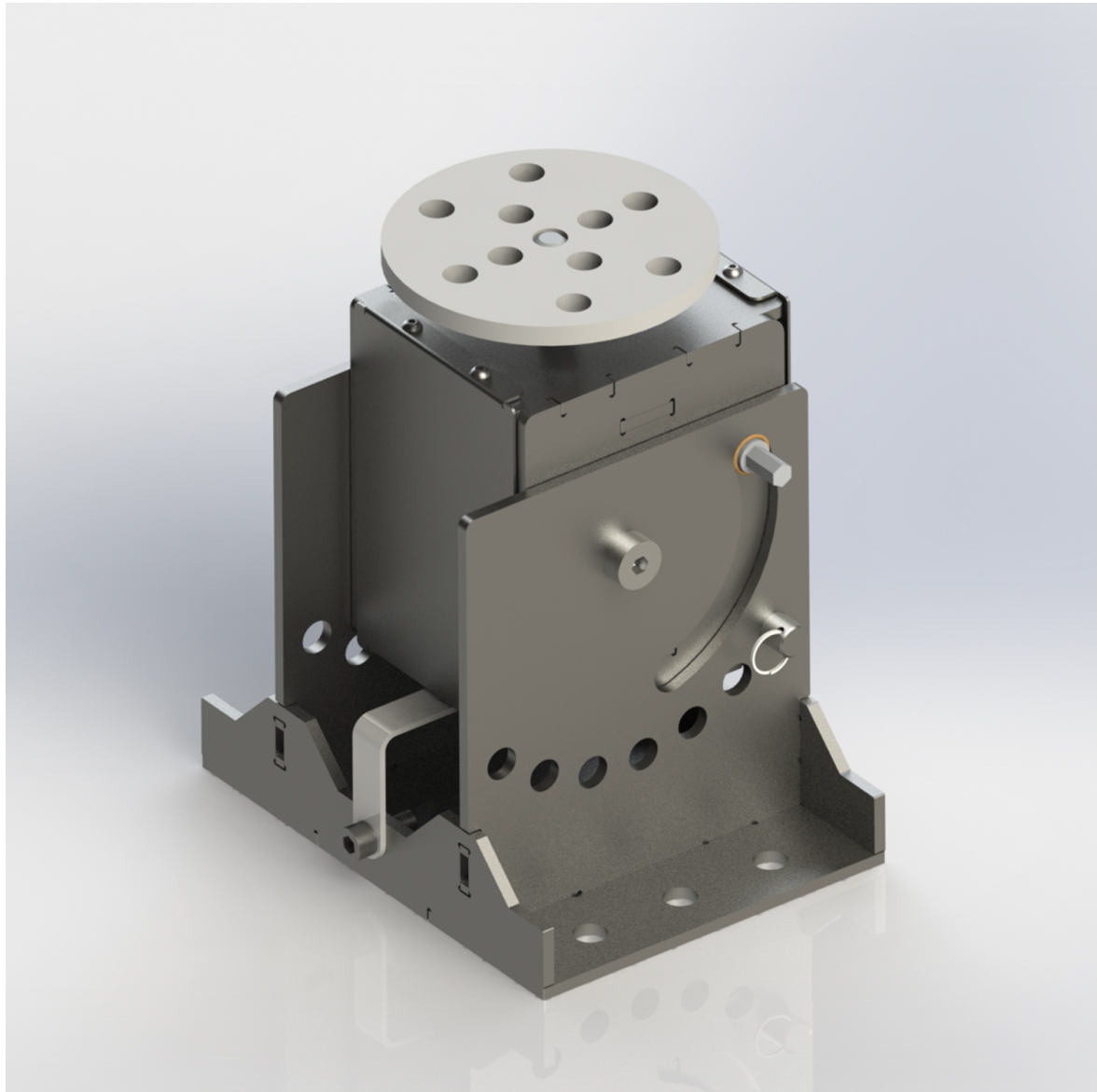




6" MANUAL WELD POSITIONER(WJT-WP6UW-16)

Product Images



Short Description

Additional Information

Stock Number	BA9-1232681
Compatibility	Any table that uses a 16mm hole
Fixture Holes	16mm
Model Number	WJT-WP6UW-16
Range of Measurement	360 degrees
Gross Weight	35.0
Distance Between Centers (Mm.)	50
Material Type	SS41 Carbon Steel
Steel Frame Thickness (In.)	1/4

